

Product Range

2020 First edition



OEM & Fixed Mount



Handheld Scanners







Mobile Computers



Display Solutions

≡ OPTICON

Table of Contents

	Handheld Scanners	3
	Cabled Scanners	4
	Wireless Scanners	7
	Companion Scanners	8
	Mobile Computers	11
	Windows Mobile Computers	12
	Android Mobile Computers	14
	Proprietary Mobile Computers	16
	OEM & Fixed Mount	19
	Fixed Mount Scanners	20
	Scan Engines	21
	Display Solutions	23
	ESL	24
	Full Color Displays	27

Handheld Scanners

Quick, intuitive and modern. Both our handheld and companion scanners are designed to be lightweight and easy to use, letting you quickly start scanning to improve your data management. Our technology enables quicker, more accurate scanning and it even reads barcodes from smartphones and computer screens. Also damaged barcodes are no challenge for our devices.

Collecting scanned barcode data with your laptop, tablet or smartphone is made easy with the extensive companion scanners range. All these devices are extremely small and lightweight, making them easy to carry or store in a pocket.

All Opticon's handheld scanners come with a 2-year warranty and international service support.

Opticon handheld scanners power:

- Patient administration
- On-counter scanning
- Data reporting
- Price checking
- Hands-free scanning
- Inventory management
- Asset tracking
- and many other applications



Cabled Scanners



C-37

CCD

Barcode CCD Scanner
Weight: Ca. 90 g / 3.2 oz
Drop proof: 1.5 m / 5 ft.
Ergonomics: Hand scanner

C-37-WHT-USB
C-37-BLK-RS232
C-37-BLK-USB

12309
12305
12306



C-40

CCD

Barcode CCD Scanner
Weight: Ca. 73 g / 2.6 oz
Drop proof: 1.5 m / 5 ft.
Ergonomics: Hand scanner

C-40-USB-HID-AM-V-WHT

** 13672



L-50C

CCD

Barcode CCD Scanner
Weight: Ca. 145 g / 5.1 oz
Drop proof: 1.5 m / 5 ft.
Ergonomics: Pistol grip scanner

L-50C-USB-BLK-STD
RS232-CABLE-BLK
USB-CABLE-BLK

13750
14001
13774



C-41S

CCD

Barcode CCD Scanner
Weight: Ca. 55 g / 1.9 oz
Drop proof: 1.5 m / 5 ft.
Ergonomics: Hand scanner

C-41S-USB-HID-BLK
C-41-USB-HID-AM-V-WHT

13894
13673



OPL-6845S

Laser

Barcode Laser Scanner
Weight: Ca. 75 g / 2.5 oz
Drop proof: 1.5 m / 5 ft.
Ergonomics: Hand scanner

OPL-6845S-BLK-USB+STD 14164
OPL-6845S-WHT-AM-USB+STD 14298
RS232-CABLE-BLK-2M 14160
RS232-CABLE-WHT-2M * 14351
USB-CABLE-BLK-2M * 14268
USB-CABLE-WHT-2M * 14269
USB-CABLE-BLK-2.8M * 14468



L-50R

Laser

Barcode Laser Scanner
Weight: Ca. 145 g / 5.1 oz
Drop proof: 1.5 m / 5 ft.
Ergonomics: Pistol grip scanner

RS232-CABLE-BLK
USB-CABLE-BLK

14001
13774



OPR-3201Z

Laser

Barcode Laser Scanner
Weight: Ca. 80 g / 2.8 oz
Drop proof: 1.5 m / 5 ft.
Ergonomics: Pistol grip scanner

OPR-3201Z-BLK+STD-USB 11789
OPR-3201Z-BLK+STD-RS232 * 11843
OPR-3201Z-BLK-RS232C * 11842
OPR-3201Z-WHT+STD-USB 11795



L-46R

Laser

Barcode Laser Scanner
Weight: Ca. 112 g / 3.9 oz
Drop proof: 1.8 m / 6 ft.
Ergonomics: Pistol grip scanner

L-46R-USB-BLK-STD 14008
L-46R-USB-WHT-STD 14060
USB-CABLE-BLK-2M 14140
RS232-CABLE-BLK-2M 14142
RS232-CABLE-WHT-2M * 14143



OPR-2001Z

Laser

Barcode Laser Scanner
Weight: Ca. 60 g / 2.1 oz
Drop proof: 1.5 m / 5 ft.
Ergonomics: Hand Scanner

OPR-2001Z+STD-USB 11645
OPR-2001Z+STD-RS232 11646



M-10

2D

2D CMOS Imager
Omni-directional
Scan rate: Up to 60 fps
Size: 72 x 70 X 139 mm (wxdxh)
Ergonomics: Presentation scanner

M-10-USB-BLK	13356
M-10-USB-WHT	* 13440
M-10-RS232-BLK	* 13653
M-10-RS232C-WHT	* 13441
RS232-CABLE-BLK-2M	* 13695
RS232-CABLE-WHT-2M	* 13696
USB-CABLE-BLK-2M	14044



M-11

2D

2D CMOS Imager
Omni-directional
Scan rate: Up to 120 fps
Size: 84.4 x 48 x 124.4 mm (wxdxh)
Ergonomics: Presentation scanner

M-11-BLK-USB	14294
RS232-M-11-CABLE-BLK-2.1M	14499
USB-M-11-CABLE-BLK-2.1M	14502



L-51X

2D

2D CMOS Imager
Weight: Ca. 145 / 4.9 oz
Drop proof: 1.5 m / 5 ft.
Ergonomics: Pistol grip scanner

L-51X-USB-BLK-STD	13957
USB-CABLE-BLK-2M	13774
RS232-CABLE-BLK	14001



OPI-3601

2D

2D CMOS Imager
Weight: Ca. 85 g / 3.0 oz
Drop proof: 1.5 m / 5 ft.
Ergonomics: Pistol grip scanner

OPI-3601-BLK-USB-HID+STD	13084
OPI-3601-BLK-USB-HD-HID-STD	* 13895
OPI-3601-BLK-RS232+STD	13083



L-22X

2D

2D CMOS Imager
Weight: Ca. 77 g / 2.7 oz
Drop proof: 1.5 m / 5 ft.
Ergonomics: Hand scanner

L-22X-USB-BLK-STD	14009
L-22X-USB-WHT	* 14310
RS232-CABLE-BLK-2M	14160
USB-CABLE-BLK-2M	* 14268
USB-CABLE-WHT-2M	* 14269
USB-CABLE-BLK-2.8M	* 14468



L-46X

2D

2D CMOS Imager
Weight: Ca. 112 g / 3.9 oz
Drop proof: 1.8 m / 6 ft.
Ergonomics: Pistol grip scanner

L-46X-USB-BLK-STD	14007
L-46X-BLK-RS232C+PS+STD	14072
L-46X-USB-WHT-STD	* 14059
L-46X-USB-WHT-STD US	* 14606
USB-CABLE-BLK-2M	14140
RS232-CABLE-BLK-2M	14142
RS232-CABLE-WHT-2M	* 14143

Cabled Scanners Accessories

C-37

Power supply RS232
Enclosed: No
Art. code: 10991



L-50R

Stand
Enclosed: Yes



Power supply RS232
Enclosed: No
Art. code: 10991



OPR-2001Z

Stand
Enclosed: Yes
Art. code: 11647



Power supply RS232
Enclosed: No
Art. code: 10991



L-22X

Stand
Enclosed: Yes (Not
with white edition)



Power supply RS232
Enclosed: No
Art. code: 11052



L-51X

Stand
Enclosed: Yes



Power supply RS232
Enclosed: No
Art. code: 11052



OPR-3201Z

Stand
Enclosed: Yes



Power supply RS232
Enclosed: No
Art. code: 10991



L-46R

Stand
Enclosed: Yes



Power supply RS232
Enclosed: No
Art. code: 11052



OPI-3601

Stand
Enclosed: Yes



Power supply RS232
Enclosed: No
Art. code: 10991



M-11

Stand
Enclosed: No
Art. code: 14590



Power supply RS232
Enclosed: No
Art. code: 11052



L-46X

Stand
Enclosed: Yes



Power supply RS232
Enclosed: Yes
Art. code: 11052



OPL-6845S

Stand
Enclosed: Yes



Power supply RS232
Enclosed: No
Art. code: 11052



L-50C

Stand
Enclosed: Yes



Power supply RS232
Enclosed: No
Art. code: 10991



M-10

Power supply RS232
Enclosed: No
Art. code: 10991



Wireless Scanners



OPC-3301i

CCD

Barcode CCD Scanner
Weight: Ca. 127 g / 4.3 oz
Bluetooth
MFi certified
Ergonomics: Pistol grip scanner

OPC-3301i-BLK
CHG-3201-BLK

13724
13726



OPI-3301i

2D

2D CMOS Imager
Weight: Ca. 132 g / 4.5 oz
Bluetooth
MFi certified
Ergonomics: Pistol grip scanner

OPI-3301i-BLK
CHG-3201-BLK

13725
13726

Wireless Scanners Accessories

OPC-3301i

CHG-3201 BLK
Enclosed: No
Art. code: 13726



CRD-3301B
Enclosed: No
Art. code: ** 13982



Power Supply 6V/2A
Enclosed: No
Art. code: 10991



Rechargeable Battery
Enclosed: Yes
Art. code: 13830



OPA-3201-USB Dongle
Enclosed: No
Art. code: 13840



OPI-3301i

CHG-3201 BLK
Enclosed: No
Art. code: 13726



CRD-3301B
Enclosed: No
Art. code: 13982



Power Supply 6V/2A
Enclosed: No
Art. code: 10991



Rechargeable Battery
Enclosed: Yes
Art. code: 13830



OPA-3201-USB Dongle
Enclosed: No
Art. code: 13840



Companion Scanners



OPN-4000i CCD

Barcode CCD Scanner
Keypad: 2 keys
USB
Bluetooth
MFi certified
Weight: Ca. 53 g / 1.9 oz (incl. battery)

OPN-4000i-WHT 13442



OPN-4000n CCD

Barcode CCD Scanner
Keypad: 2 keys
USB
Bluetooth
Weight: Ca. 53 g / 1.9 oz (incl. battery)

OPN-4000n-WHT 13443



OPN-2001 Laser

Barcode Laser Scanner
Keypad: 2 keys
USB
Weight: Ca. 28 g / 1.0 oz (incl. battery)

OPN-2001 11858



RS-2006 Laser

Barcode Laser Ringscanner
Adjustable strap
Keypad: 2 keys + 1 trigger on the strap
USB
Bluetooth
Weight: Ca. 42 g / 1.4 oz (incl. battery and strap)

RS-2006 13919



OPN-2006 Laser

Barcode Laser Scanner
Keypad: 2 keys
USB
Bluetooth
Weight: Ca. 29 g / 1.0 oz (incl. battery)

OPN-2006 13336



PX-20 2D

2D CMOS Imager
Keypad: 2 keys
USB
Bluetooth
Weight: Ca. 40 g / 1.4 oz (incl. battery)

PX-20 13131



OPN-3002i 2D

2D CMOS Imager
Keypad: 2 keys
USB
Bluetooth
MFi certified
Weight: Ca. 57 g / 2.0 oz (incl. battery)

OPN-3002i-WHT 13169



OPN-3002n 2D

2D CMOS Imager
Keypad: 2 keys
USB
Bluetooth
Weight: Ca. 57 g / 2.0 oz (incl. battery)

OPN-3002n-BLK 13168

Companion Scanners Accessories

OPN-4000i

Neck Strap
Enclosed: Yes



USB Cable
Enclosed: Yes



Silicone Cover
Enclosed: No
Art. code: 13401



OPN-4000n

Neck Strap
Enclosed: Yes



USB Cable
Enclosed: Yes



Silicone Cover
Enclosed: No
Art. code: 13401



OPN-2001

Neck Strap
Enclosed: Yes



USB Cable
Enclosed: Yes



Silicone Cover
Enclosed: No
Art. code: 13402



OPN-2006

Neck Strap
Enclosed: Yes



USB Cable
Enclosed: Yes



Silicone Cover
Enclosed: No
Art. code: 13402



OPN-3002i

Neck Strap
Enclosed: Yes



USB Cable
Enclosed: Yes



Silicone Cover
Enclosed: No
Art. code: 13401



PX-20

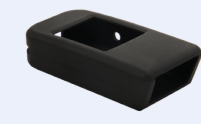
Neck Strap
Enclosed: Yes



USB Cable
Enclosed: Yes



Silicone Cover
Enclosed: No
Art. code: 14069



OPN-3002n

Neck Strap
Enclosed: Yes



USB Cable
Enclosed: Yes



Silicone Cover
Enclosed: No
Art. code: 13401



PX-20 Glove right
Enclosed: No
Art. code: 14325



PX-20 Glove Left
Enclosed: No
Art. code: 14326



PX-20 Arm Band
Enclosed: No
Art. code: 14494



RS-2006

Neck Strap
Enclosed: Yes



USB Cable
Enclosed: Yes



Handheld Scanners Product Selector

		1D-CCD	1D-Laser	2D	USB	RS232	Bluetooth	Black	White	IP Rating	Cabled	Wireless	Pistol Grip Scanner	Hand Scanner	Ring Scanner	Presentation Scanner	Stand Included	Stand Sold Separately
Cabled Scanners																		
C-37-WHT-USB	12309	●			●			●		42	●			●				●
C-37-BLK-RS232	12305	●				●		●		42	●			●				●
C-37-BLK-USB	12306	●			●			●		42	●			●				●
C-40-USB-HID-AM-V-WHT	** 13672	●			●			●		42	●			●				●
C-41S-USB-HID-BLK	13894	●			●			●		42	●			●				●
C-41S-USB-HID-AM-V-WHT	13673	●			●			●		42	●			●				●
L-22X-USB-BLK-STD	14009		●	●	●			●		42	●			●				●
L-22X-USB-WHT	* 14310		●	●	●			●		42	●			●				●
L-46R-USB-BLK-STD	14008	●			●	●		●		42	●		●					●
L-46R-USB-WHT-STD	14060	●			●	●		●		42	●		●					●
L-46X-USB-BLK-STD	14007		●	●	●			●		42	●		●					●
L-46X-USB-WHT-STD	* 14059		●	●	●			●		42	●		●					●
L-46X-USB-WHT-STD US	* 14606		●	●	●			●		42	●		●					●
L-50C-USB-BLK-STD	13750	●			●			●		42	●		●					●
L-51X-USB-BLK-STD	13957		●	●	●			●		42	●		●					●
M-10-USB-BLK	13356		●	●	●			●		52	●					●		
M-10-RS232-BLK	* 13653		●	●	●			●		52	●					●		
M-10-USB-WHT	* 13440		●	●	●			●		52	●					●		
M-10-RS232C-WHT	* 13441		●	●	●			●		52	●					●		
M-11-BLK-USB	25294		●	●				●		42	●					●		
OPI-3601-BLK-USBHID+STD	13084		●	●				●		42	●		●					●
OPI-3601-BLK-USB-HD-HID-STD	* 13895		●	●				●		42	●		●					●
OPI-3601-BLK-RS232+STD+PS	13083		●		●			●		42	●		●					●
OPL-6845S-BLK+STD-USB	14164	●			●	●		●		42	●			●				●
OPL-6845S-WHT-AM-USB+STD	14298	●			●	●		●		42	●			●				●
OPR-2001Z+STD-USB	11645	●			●			●		42	●			●				●
OPR-2001Z+STD-RS232	11646	●			●			●		42	●			●				●
OPR-3201Z-BLK+STD-USB	11789	●			●					42	●		●					●
OPR-3201Z-BLK+STD-RS232	* 11843	●				●				42	●		●					●
OPR-3201Z-BLK-RS232C	* 11842	●				●				42	●		●					●
OPR-3201Z-WHT+STD-USB	11795	●			●					42	●		●					●
Wireless Scanners																		
OPC-3301i-BLK	13724	●					●	●		42		●	●					●
OPI-3301i-BLK	13725		●				●	●		42		●	●					●
Companion Scanners																		
OPN-2001	11858		●		●			●		42		●		●				
OPN-2006	13336		●		●		●	●		42		●		●				
OPN-3002i	13169		●	●		●		●		42		●		●				
OPN-3002n	13168		●	●		●		●		42		●		●				
OPN-4000i-WHT	13442	●			●		●		●	42		●		●				
OPN-4000n-WHT	13443	●			●		●		●	42		●		●				
PX-20	13131			●	●		●	●		54		●		●				
RS-2006	13919		●		●		●	●		42		●			●			

* Product subject to minimum order quantities. ** Product discontinued stock is still available.

Mobile Computers

Opticon mobile computers take scanning to a whole new level and can connect in various ways to provide real-time data transfer at any given moment.

The ability to run on different operating systems such as Windows Mobile, Android and proprietary operating systems, enables the use of custom applications and a seamless integration of barcode-based data capture into mobile businesses. Consequently, our mobile computers are rugged, cost-effective and offer a complete solution in one single product. As always, Opticon provides a dedicated cradle, several accessories and a comprehensive care package to give that peace of mind.

Mobile Devices Power Solutions in the following verticals:

- Field service
- Field sales
- Route accounting
- Inventory management
- Logistics
- Delivery
- Courier



Windows Mobile Computers



H-21 1D

Laser

Barcode Laser Scanner
Operating system: Windows Mobile 6.5
Color camera
Keypad: Numeric
IP rate: 64
GPRS/EDGE/3G/3.5G
Wi-Fi (802.11 b/g), Bluetooth
GPS

H-21-1D-NUMERIC

** 12596



H-21 2D

2D

2D CMOS Imager
Operating system: Windows Mobile 6.5
Color camera
Keypad: Numeric or Qwerty
IP rate: 64
GPRS/EDGE/3G/3.5G
Wi-Fi (802.11 b/g), Bluetooth
GPS

H-21-2D-NUMERIC
H-21-2D-QWERTY

** 12597
** 12599



H-22 1D

Laser

Barcode Laser Scanner
Operating system: Windows Mobile 6.5
Color camera
Keypad: Qwerty
IP rate: 65
GPRS/EDGE/3G/3.5G
Wi-Fi (802.11 b/g), Bluetooth
GPS

H-22-1D-QWERTY
H-22-1D-QWERTY-RFID
H-22-1D-NUMERIC-RFID

** 12754
** 12758
** 12756



H-22 2D

2D

2D CMOS Imager
Operating system: Windows Mobile 6.5
Color camera
Keypad: Numeric or Qwerty
IP rate: 65
GPRS/EDGE/3G/3.5G
Wi-Fi (802.11 b/g), Bluetooth
GPS

H-22-2D-QWERTY
H-22-2D-QWERTY-RFID

** 12755
** 12759



H-32

Laser

Barcode Laser Scanner
Operating system: Windows
Embedded Compact 7
Keypad: Numeric
IP rate: 54
Wi-Fi (802.11 a/b/g/n)
Bluetooth

H-32-1D

13218

Windows Mobile Computers Accessories

H-21

Mini USB Cable
Enclosed: Yes



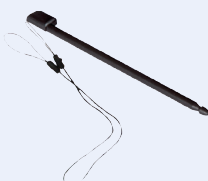
USB AC Adapter
Enclosed: Yes



Standard Battery
Enclosed: Yes
Art. code: 12560



Stylus + Cord
Enclosed: Yes



Wrist Strap
Enclosed: Yes



Ear Microphone
Enclosed: Yes



Leather Case Enclosed: Yes 	Starter Disc Enclosed: Yes 	CRD-21 Enclosed: No Art. code: ** 12558 With USB cable 	CRD Power Supply Enclosed: No Art. code: 10991 
--	--	--	--

H-22

Micro USB Cable Enclosed: Yes 	USB AC Adapter Enclosed: Yes 	Standard Battery Enclosed: No Art. code: ** 12560 	Stylus + Cord Enclosed: Yes Art. code: ** 12993 	Wrist Strap Enclosed: Yes 	Ear Microphone Enclosed: Yes 
H-22 Pistol Grip Enclosed: No Art. code: ** 12936 	H-22 Holster Enclosed: No Art. code: ** 13104 	CMK-22 Car Kit Enclosed: No Art. code: ** 13062 	CRD-22 Enclosed: No Art. code: ** 12923 With Power Supply 		

H-32

USB Cable Enclosed: Yes 	Wrist Strap Enclosed: Yes 	Standard Battery Enclosed: No Art. code: 13224 	Stylus + Cord Enclosed: Yes Art. code: 13289 Art. code: 13304 	H-32 Holster Enclosed: No Art. code: * 13225 	CRD-32 Enclosed: No Art. code: 13399 
CRD Power supply Enclosed: No Art. code: 10991 	Micro USB Cable 1m Enclosed: No Art. code: 13610 	Ethernet Cable 1m Enclosed: No Art. code: 12607 			

Android Mobile Computers



H-28

2D

2D CMOS Imager
Operating system: Android 6.0.1
16 MP camera with Flash
IP 67, Drop rating: 1.8 m with bumper
Qualcomm Snapdragon 617 A53
Octa-core Processor
2960 mAh Battery
Wi-Fi, 802.11 a/b/g/n/ac/r
Bluetooth 4.1 LE, NFC, GPS

H-28-Wi-Fi/Bluetooth

** 14204



H-29

2D

2D CMOS Imager
Operating system: Android 6.0.1
8.0 MP camera with Flash
IP 65, Drop rating: 1.5 m
Qualcomm Snapdragon 617 A53
Octa-core Processor
2300 mAh Battery
Wi-Fi, 802.11 a/b/g/n/ac/r
Bluetooth 4.1 LE, NFC, GPS

H-29-Wi-Fi/Bluetooth
H-29-4G-Europe

** 14208
** 14210



H-31 & H-33

2D CMOS Imager
Operating system: Android 9
16 MP camera with Flash
IP 67, Drop rating: 1.8 m with bumper
Qualcomm SDM450 A53 1.8 GHz
Octa-core Processor
4000 mAh Battery
Wi-Fi, 802.11 a/b/g/n/ac/r
Bluetooth 4.1 LE, NFC, GPS

H-31-Wi-Fi
H-33-4G-Europe
H-33-4G-NCSA

14664
14662
14663

Android Mobile Computers Accessories

H-28 **

Micro USB Cable &
Power Adapter
Enclosed: Yes



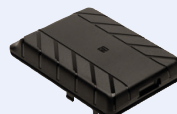
Battery Door NFC &
Standard Battery
Enclosed: Yes
Art. code: 14217
Art. code: 14219



Extended Battery
5920 mAh
Enclosed: No
Art. code: 14218



Extended Battery
Door NFC
Enclosed: No
Art. code: 14220



CRD-28-USB
Enclosed: No
Art. code: 14212
With power supply,
Excl. Power cable



CRD-28-Ethernet
Enclosed: No
Art. code: 14213
With power supply,
Excl. Power cable



Power Cable
Enclosed: No
Art. code: US 13345,
EU 10999, SA 13345



H-28 4 Slot Cradle
Enclosed: No
Art. code: 14490



H-28 Vehicle Cradle
Enclosed: No
Art. code: 14491



Stylus + Cord
Enclosed: No
Art. code: 14225



Bumper Kit
Enclosed: No
Art. code: 14711



Holster H-28
Enclosed: No
Art. code: 14446



H-28 Pistol Grip
Enclosed: No
Art. code: 14489



Android Mobile Computers Accessories

H-29 **

Micro USB Cable & Power Adapter
Enclosed: Yes



Battery Door NFC & Standard Battery
Enclosed: Yes
Art. code: 14221
Art. code: 14223



Extended Battery 3450 mAh
Enclosed: No
Art. code: 14222



Extended Battery Door NFC
Enclosed: No
Art. code: 14224



CRD-29-USB
Enclosed: No
Art. code: 14214
With power supply,
Excl. power cable



CRD-29-Ethernet
Enclosed: No
Art. code: 14215
With power supply,
Excl. power cable



Power Cable
Enclosed: No
Art. code: US 13345,
EU 10999, SA 13345



Stylus + Cord
Enclosed: No
Art. code: 14225



H-31 & H-33

USB C cable
Enclosed: Yes



Power Supply
Enclosed: No
Art. code: 14681 EU
Art. code: 14682 US



Battery Door NFC & Standard Battery
Enclosed: Yes
Art. code: 14805
Art. code: 14807



Extended Battery 5920 mAh
Enclosed: No
Art. code: 14218



Extended Battery Door NFC
Enclosed: No
Art. code: 14806



Hand Strap
Enclosed: Yes
Art. code: 14808



Bumper Kit
Enclosed: No
Art. code: 14711



Stylus + Cord
Enclosed: No
Art. code: 14225



Holster H-31/33
Enclosed: No
Art. code: 14446



H-31/33 Pistol Grip
Enclosed: No
Art. code: 14489



H-31/33 4 Slot Cradle
Enclosed: No
Art. code: 14490



H-28 Vehicle Cradle
Enclosed: No
Art. code: 14491



CRD-31-USB
Enclosed: No
Art. code: 14809
With power supply,
Excl. Power cable



Power Cable
Enclosed: No
Art. code: US 13345,
EU 10999, SA 13345



Proprietary Mobile Computers



OPH-1005

Laser

Barcode Laser Scanner
Keypad: 23 keys
Display: Color, 320 x 240 pixels
IrDA
Weight: Ca. 140 g / 4.9 oz (incl. battery)

OPH-1005

13036



OPH-3001

Laser

Barcode Laser Scanner
Keypad: 21 keys
Display: 320 x 240 pixels
IrDA
Mini USB
Weight: Ca. 156 g / 5.5 oz (incl. battery)

OPH-3001

13656



OPL-9725 OSE

Laser

Barcode Laser Scanner
Keypad: 1 key
IrDA
Weight: Ca. 85 / 3.0 oz (incl. battery)

OPL-9725-OSE

13222



OPL-9815

Laser

Barcode Laser Scanner
Keypad: 18 keys
Display: 112 x 64 pixels graphic LCD
IrDA
GPS
Bluetooth
Weight: Ca. 115 g / 4.1 oz (excl. battery)

OPL-9815

12963



OPH-5000i

2D

2D CMOS Imager
Keypad: 22 keys
Display: 128 x 160 pixels graphic LCD
WiFi
Bluetooth, NFC
MFi certified
Buzzer and Vibration
3.7V 1100mAh 4.1Wh
Weight: Ca. 120 g / 4.2 oz (incl. battery)

OPH-5000ii-BLK

14741



PX-36

2D

2D CMOS Imager
Keypad: 18 keys
Display: 112 x 64 pixels graphic LCD
IrDA
Bluetooth
Weight: Ca. 115 g / 4.1 oz (excl. battery)

PX-36

13749

Handheld Computers Accessories

OPH-1005

Standard Battery
Enclosed: Yes
Art. code: 12025



Wrist Strap
Enclosed: Yes



CRD-1004
Art. code: 12589
Included: Ethernet Cable (12607)



CRD-1006
Art. code: 13167
Included: USB Cable (10957)
RS232 Cable (14273)



CRD Power Supply
Enclosed: No
Art. code: 10991



Proprietary Mobile Computers Accessories

OPH-3001

Standard Battery
Enclosed: Yes
Art. code: 12025



Wrist Strap
Enclosed: Yes



USB Cable
Enclosed: Yes



OPL-9815

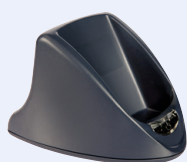
Standard Battery
Enclosed: Yes
Art. code: 12025



Wrist Strap
Enclosed: Yes



CRD-9723RU
Art. code: 10935
Included: RS232



CRD Power Supply
Enclosed: No
Art.: 10991 + 11870



CRD USB Cable
Enclosed: No
Art. code: 10957



OPH-5000i

Standard Battery
Enclosed: Yes
Art. code:



Wrist Strap + USB
Cable
Enclosed: Yes



CRD-5000
Art. code: 14742



CRD Power Supply
Enclosed: No
Art.: 11052



OPL-9725 OSE **

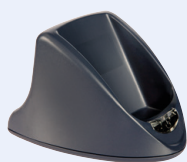
Standard Battery
Enclosed: No
Art. code: 13224



Wrist Strap
Enclosed: Yes



CRD-9723RU
Art. code: 10935
Included: RS232
Cable (10299)



CRD Power Supply
Enclosed: No
Art.: 10991 + 11870



CRD USB Cable
Enclosed: No
Art. code: 10957



PX-36

Standard Battery
Enclosed: No
Art. code: 13224



Wrist Strap
Enclosed: Yes



CRD-9723RU
Art. code: 10935
Included: RS232
Cable (10299)



CRD Power Supply
Enclosed: No
Art.: 10991 + 11870



CRD USB Cable
Enclosed: No
Art. code: 10957



Mobile Computers Product Selector

		1D-CCD	1D-Laser	2D	Windows Mobile	Windows Embedded	Android	Proprietary	Numeric	Qwerty	USB	Bluetooth	IrDA	GPRS/EDGE	GPS	Wi-Fi	NFC	RFID	IP Rating
Windows Mobile Computers																			
H-21-1D-NUMERIC	** 12596		●		●				●		●	●	●	●	●	●			64
H-21-2D-NUMERIC	** 12597			●	●				●		●	●	●	●	●	●			64
H-21-2D-QWERTY	** 12599			●	●					●	●	●	●	●	●	●			64
H-22-1D-QWERTY	** 12754		●		●				●		●	●	●	●	●	●			65
H-22-1D-QWERTY-RFID	** 12758		●		●				●		●	●	●	●	●	●		●	65
H-22-1D-NUMERIC-RFID	** 12756																		
H-22-2D-QWERTY	** 12755			●	●				●		●	●	●	●	●	●			65
H-22-2D-QWERTY-RFID	** 12759			●	●				●		●	●	●	●	●	●		●	65
H-32-1D	13218		●			●			●		●	●				●			54
Android Mobile Computers																			
H-28-Wifi/Bluetooth	** 14204			●			●				●	●				●	●		67
H-29-Wifi/Bluetooth	** 14208			●			●		●		●	●				●	●		65
H-29-4G-Europe	** 14210			●			●		●		●	●		●	●	●	●		65
H-31-Wi-Fi	14664			●			●				●	●				●	●		67
H-33-4G-Europe	14662			●			●				●	●		●	●	●	●		67
H-33-4G-NCSA	14663			●			●				●	●		●	●	●	●		67
Proprietary Mobile Computers																			
OPH-1005	13036		●					●	●				●						54
OPH-3001	13656		●					●	●		●		●						54
OPL-9725 OSE	** 13222		●					●					●						54
OPL-9815	12963		●					●	●			●	●		●				54
OPH-5000i	14741			●				●	●		●	●				●	●		54
PX-36	13749			●				●	●			●	●						54

* Product subject to minimum order quantities. ** Product discontinued stock is still available.

OEM & Fixed Mount

Opticon offers two distinct world-class OEM solutions; the scan engine and the stationary scanner.

Both solutions are made of high quality materials and adhere to demanding regulatory and safety requirements. This, together with the smart design, makes our scan engines and stationary scanners suitable for integration into mobile computers, handheld scanners, kiosks, medical equipment, vending machines, point-of-sale devices and industrial applications.

Opticon OEM & Stationary solutions power:

- Laboratory automation equipment
- Retail point of sale
- Self-service kiosk
- Medical diagnostic equipment
- Medical point of care equipment
- Self check-out kiosks
- Data storage equipment
- Mobile data collection devices
- Industrial automation



Fixed Mount Scanners



NLV-1001

Laser

Barcode Laser Scanner
Scan rate: 100 scans/sec
Case material: ABS
30.0 x 43.3 x 20.0 mm (wxdxh)
1.18 x 1.70 x 0.79 in (wxdxh)
IP rate: 43
RS232, USB (HID/VCP)

NLV-1001-RS232
NLV-1001-USB-HID

11613
11614



F-70

CCD

Barcode CCD Scanner
Scan rate: 700 scans/sec
Case material: Sheet metal
I-type: 47.0 x 55.0 x 20.0 mm (wxdxh)
1.85 x 2.17 x 0.79 in (wxdxh)
L-type: 55.0 x 52.0 x 20.0 mm (wxdxh)
2.17 x 2.05 x 0.79 in (wxdxh)
IP rate: 42
RS232

F-70-I-RS232
F-70-L-RS232

13184
13185



NLV-4001

CCD

Barcode CCD Scanner
Scan rate: 300 scans/sec
Case material: ABS
33.0 x 41.1 x 24.0 mm (wxdxh)
1.30 x 1.62 x 0.94 in (wxdxh)
IP rate: 65
RS232, USB (HID/VCP)

NLV-4001-RS232 NO CONNECTOR 13934
NLV-4001-USB 13935



NLV-3101

2D

2D CMOS Imager
Scan rate: up to 60 fps
Case material: ABS
33.0 x 41.1 x 24.0 mm (wxdxh)
1.30 x 1.62 x 0.94 in (wxdxh)
IP rate: 65
RS232, USB (HID/VCP)

NLV-3101-RS232
NLV-3101-USB

13091
13092



NLV-5201

2D

2D CMOS Imager
Scan rate: up to 100 fps
Case material: Zinc alloy die casting
41.1 x 33.0 x 24.0 mm (wxdxh)
1.62 x 1.30 x 0.94 in (wxdxh)
IP rate: 65
RS232

NLV-5201-RS232C(LE) 14309
NLV-5201-UD-RS232C(LE) 14265
NLV-5201-USB-HID 14483



PR-11

2D CMOS Imager
Omni-directional
Case material: ABS
Scan rate: Up to 120 fps
Size: 141.4 x 128.8 x 109.0 mm (wxdxh)
Ergonomics: Passport Reader

PR-11-BLK-USB 14659
PR-11-WHT-USB 14660
RS232-M-11-CABLE-BLK-2.1M 14499
USB-M-11-CABLE-BLK-2.1M 14502

Fixed Mount Scanners Accessories

F-70

Power Supply RS232
Enclosed: No
Art. code: 11052



NLV-1001

Power Supply RS232
Enclosed: No
Art. code: 11052



NLV-3101

Power Supply RS232
Enclosed: No
Art. code: 10991



PR-11

Power supply RS232
Enclosed: No
Art. code: 11052



Scan Engines



MDC-100

CCD

Barcode CCD Scanner
 Scan rate: 300 scans/sec
 22.8 x 15.0 x 11.5 mm (wxdxh)
 0.90 x 0.59 x 0.45 in (wxdxh)
 Weight: Ca. 3.5 g / 0.12 oz

MDC-100

13349



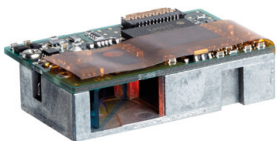
MDC-200

CCD

Barcode CCD Scanner
 Scan rate: 300 scans/sec
 22.8 x 15.0 x 7.5 mm (wxdxh)
 0.90 x 0.59 x 0.30 in (wxdxh)
 Weight: Ca. 2.6 g / 0.09 oz

MDC-200

13627



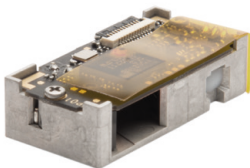
MDL-1000

Laser

Barcode Laser Scanner
 Scan rate: 100 scans/sec
 28.0 x 18.0 x 7.8 mm (wxdxh)
 1.10 x 0.71 x 0.31 in (wxdxh)
 Weight: Ca. 10 g / 0.35 oz

MDL-1000

11501



MDL-1500

Laser

Barcode Laser Scanner
 Scan rate: 100 scans/sec
 28.0 x 14.0 x 8.0 mm (wxdxh)
 1.10 x 0.55 x 0.32 in (wxdxh)
 Weight: Ca. 3.9 g / 0.13 oz

MDL-1500

13978



MDL-2001

Laser

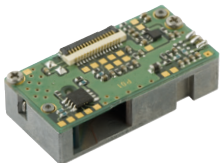
Barcode Laser Scanner
 Scan rate: 100 scans/sec
 20.4 x 18.0 x 11.2 mm (wxdxh)
 0.79 x 0.71 x 0.44 in (wxdxh)
 Weight: Ca. 4.7 g / 0.17 oz

MDL-2001

MDL-2001 FCC FLATCABLE

12426

11438



MSL-1000

Laser

Barcode Laser Scanner
 Scan rate: 100 scans/sec
 28.0 x 14.0 x 7.8 mm (wxdxh)
 1.10 x 0.55 x 0.31 in (wxdxh)
 Weight: Ca. 3.9 g / 0.14 oz

MSL-1000

11400



MDI-3100

2D

2D CMOS Imager
 Scan rate: up to 60 fps
 25.3 x 21.2 x 12.4 mm (wxdxh)
 1.00 x 0.84 x 0.49 in (wxdxh)
 Weight: Ca. 8 g / 0.28 oz

MDI-3100

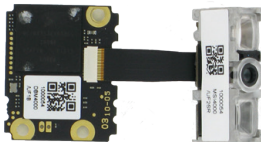
MDI-3100 HD

MDI-3100 FFC FLATCABLE

12972

12975

11438



MDI-4000

2D

2D CMOS Imager
 Scan rate: up to 100 fps
 25.3 x 58.3 x 6.0 mm (wxdxh)
 1.00 x 2.30 x 0.28 in (wxdxh)
 Weight: Ca. 5.5 g / 0.19 oz

MDI-4000

MDI-4000 HD

MDI-4000 UHD

13948

* 13949

* 13959



MDI-4100/4150

2D

2D CMOS Imager
 Scan rate: up to 100 fps
 25.3 x 21.0 x 10.0 mm (wxdxh)
 1.00 x 0.83 x 0.39 in (wxdxh)
 Weight: Ca. 5.5 g / 0.19 oz

MDI-4100

MDI-4100 HD

MDI-4100 UHD

MDI-4150

MDI-4150 HD

MDI-4150 UHD

13950

* 13951

* 13960

14162

* 14251

* 14295

* Subject to minimum order quantities. ** Product discontinued stock is still available

All Engines

MEK-3100 Testkit
Enclosed: No
Art. code: 14057



OEM & Fixed Mount Product Selector

		1D-CCD	1D-Laser	2D	USB	RS232	IP Rating	Scans/Frames Per Sec.
Fixed Mount Scanners								
F-70-I-RS232	13184	●				●	42	700
F-70-L-RS232	13185	●				●	42	700
NLV-1001-RS232	11613		●			●	43	100
NLV-1001-USB-HID	11614		●		●		43	100
NLV-3101-RS232	13091			●		●	65	60
NLV-3101-USB	13092			●	●		65	60
NLV-4001-RS232 NO CONNECTOR	13934	●				●	65	300
NLV-4001-USB	13935	●			●		65	300
NLV-5201-RS232C(LE)	14309			●		●	65	100
NLV-5201-UD-RS232C(LE)	14265			●	●		65	100
NLV-5201-USB-HID	14483			●	●		65	100
PR-11-BLK-USB	14584			●	●			120
PR-11-WHT-USB	14659			●	●			120
Scan Engines	14660			●	●			120
MDC-100	13349	●			●	●		300
MDC-200	13627	●			●	●		300
MDI-3100	12972			●	●	●		60
MDI-3100 HD	12975			●	●	●		60
MDI-3100 FFC FLATCABLE	11438			●	●	●		60
MDI-4000	13948			●	●	●		100
MDI-4000 HD	13949			●	●	●		100
MDI-4000 UHD	13959			●	●	●		100
MDI-4100	13950			●	●	●		100
MDI-4100 HD	13951			●	●	●		100
MDI-4100 UHD	13960			●	●	●		100
MDI-4150	14162			●	●	●		100
MDI-4150 HD	14251			●	●	●		100
MDI-4150 UHD	14295			●	●	●		100
MDL-1000	11501	●				●		100
MDL-1500	13978		●		●	●		100
MDL-2001 CONN. GOLD	12426		●			●		100
MSL-1000	11400		●			●		100

Display Solutions

To create a distinctive business environment Opticon offers both e-paper and colored digital signage solutions. Opticon's wireless ESL system is based on a radio architecture and e-paper label that provides advantages in performance, coverage, cost and power consumption.

The benefits of digital signage are that information can be presented more easily, prices can be adjusted instantly, and the signs can adapt to the context and audience, even interactively. Opticon's solutions aim to dramatically impact how companies operate their businesses providing a superior platform that can improve profitability and enable new customer-facing applications, promotions and loyalty programs.

Our ESLs are used in industries such as retail, fashion, catering, mobile shops, jewelry, home appliances, pharmacy, industry, warehouse and room signage.

Opticon's Displays Solutions highlights include:

- Centralized administration of displays and tags with full visibility
- Integrates with existing systems
- High flexibility in display content that is user-configurable
- Ensures accurate pricing, product information and on-demand promotions
- Reduces labor costs and errors
- Enhances customer loyalty and satisfaction





EE-153R

B/W/R

Display: e-paper b/w/r
 Battery: 1x CR2450
 Radio protocol: IEEE 802.15.4
 Number of dots: 152 x 152
 Pixel pitch: 140 dpi
 Dimensions: 48.4 x 42.2 x 11.5 mm

EE-153R

14460



EE-213R

B/W/R

Display: e-paper b/w/r
 Battery: 2x CR2450
 Radio protocol: IEEE 802.15.4
 Number of dots: 212 x 104
 Pixel pitch: 112 dpi
 Dimensions: 69.9 x 34.7 x 11.5 mm

EE-213R

14471



EE-293R

B/W/R

Display: e-paper b/w/r
 Battery: 2x CR2450
 Radio protocol: IEEE 802.15.4
 Number of dots: 296 x 128
 Pixel pitch: 112 dpi
 Dimensions: 92.3 x 42.2 x 11.5 mm

EE-293R

14462



EE-420R

B/W/R

Display: e-paper b/w/r
 Battery: 2x AAA (not incl.)
 Radio protocol: IEEE 802.15.4
 Number of dots: 400 x 300
 Pixel pitch: 120 dpi
 Dimensions: 101.0 x 93.0 x 16.0 mm

EE-420R

14053



EE-750R

B/W/R

Display: e-paper b/w/r
 Battery: 4x AAA (not incl.)
 Radio protocol: IEEE 802.15.4
 Number of dots: 640 x 384
 Pixel pitch: 100 dpi
 Dimensions: 180.0 x 126.0 x 16.0 mm

EE-750R

14054



EE-150R

B/W/R

Display: e-paper b/w/r
 Battery: 1x CR2450
 Radio protocol: IEEE 802.15.4
 Number of dots: 152 x 152
 Pixel pitch: 140 dpi
 Dimensions: 45.5 x 39.9 x 14.9 mm

EE-150R

** 13946



EE-202

B/W

Display: e-paper b/w
 Battery: 2x CR2450
 Radio protocol: IEEE 802.15.4
 Number of dots: 200 x 96
 Pixel pitch: 112 dpi
 Dimensions: 65.0 x 34.0 x 15.0 mm

EE-202
EE-202R** 13826
** 14315

EE-290

B/W

Display: e-paper b/w
 Battery: 2x CR2450
 Radio protocol: IEEE 802.15.4
 Number of dots: 296 x 128
 Pixel pitch: 112 dpi
 Dimensions: 88.0 x 45.0 x 15.2 mm

EE-290

** 13841

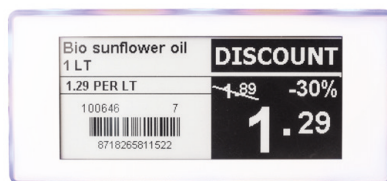


PE-152

B/W

Display: e-paper b/w
 Power: Over rail
 Radio protocol: IEEE 802.15.4
 Number of dots: 152 x 152
 Pixel pitch: 140 dpi
 Dimensions: 48.4 x 42.2 x 10.2 mm
 RGB LED, NFC and sound feedback

PE-152 14302
 PE-152 NFC A, B & F 14692
 PE-152 BWR * 14739

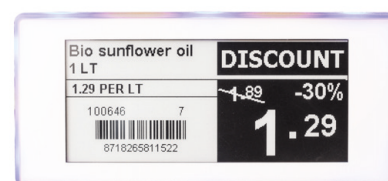


PE-292

B/W

Display: e-paper b/w
 Power: Over rail
 Radio protocol: IEEE 802.15.4
 Number of dots: 296 x 128
 Pixel pitch: 112 dpi
 Dimensions: 92.3 x 42.2 x 11.3 mm
 RGB LED, NFC and sound feedback

PE-292 14156
 PE-292 NFC A, B & F 14690
 PE-292 BWR * 14709
 PE-292 Low Temp * 14571



RE-294

B/W

Display: e-paper b/w
 Power: Over rail & Battery
 Radio protocol: IEEE 802.15.4
 Number of dots: 296 x 128
 Pixel pitch: 112 dpi
 Operating voltage: 5-12V
 LED, NFC and sound feedback

RE-294 14603
 RE-294 NFC A, B & F * 14716

ESL Accessories

All ESL			
EBS-40 Art. code: 13665	EBS Power Supply Enclosed: No Art. code: 10991	EBS Ethernet Cable Enclosed: No Art. code: 12607	ESL Server Software Enclosed: No
			

This is a short overview of the available accessories. For the complete range of accessories for the EE and PE range please check our “EE Range ESL Folder” and “PE Range ESL Folder”.

Full Color Displays



ET-350

Display: TFT
Power: 5V
Interface: Mini USB Ver. 2.0
Number of pixels: 320 x 240

TFT

ET-350

13698



ET-1002

Display: TFT
Power: 12V
Interface: USB Ver. 2.0
Number of pixels: 1280 x 800

TFT

ET-1002

14148

Full Color Displays Accessories

ET-1002

Power Supply 12V
Art. code: 14278



C7 EU Power Cable
1.5m
Art. code: 13668



ET-1002 Bracket for
Reutlinger system
Art. code: * 14699



* Subject to minimum order quantities. ** Product discontinued stock is still available

Display Solutions Product Selector

		E-Paper TFT	Battery Powered	B / W B / W / R Full Color	With Housing OEM	Wireless Data Transfer Wired Data Transfer	LED Feedback Sound Feedback	NFC A NFC B & F	DPI
ESL									
EE-150R	** 13946	●	●	●	●	●			140
EE-153R	14460	●	●	●	●	●			140
EE-202	** 13826	●	●	●	●	●			111
EE-202R	** 14315	●	●	●	●	●			111
EE-213R	14471	●	●	●	●	●			111
EE-290	** 13841	●	●	●	●	●			112
EE-293R	14462	●	●	●	●	●			112
EE-420R	14053	●	●	●	●	●			120
EE-750R	14054	●	●	●	●	●			100
PE-152	14302	●	●	●	●	●	●	●	140
PE-152 NFC A, B & F	14692	●	●	●	●	●	●	●	140
PE-152 BWR	* 14739	●	●	●	●	●	●	●	140
PE-292	14280	●	●	●	●	●	●	●	112
PE-292 NFC A, B & F	14690	●	●	●	●	●	●	●	112
PE-292 BWR	* 14709	●	●	●	●	●	●	●	112
PE-292 Low Temp	* 14571	●	●	●	●	●	●	●	112
RE-294	14603	●	●	●	●	●	●	●	112
RE-294 NFC A, B & F	* 14716	●	●	●	●	●	●	●	112
Full Color Displays									
ET-350	13698	●	●	●	●	●			114
ET-1002	14148	●	●	●	●	●			151

1D Barcodes

Industrial 2 of 5



Codabar



EAN 13



Code 39



Code 128



GS1 Databar



UPC A



Interleaved 2 of 5

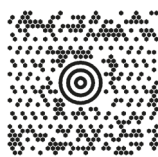


2D Barcodes

Data Matrix



Maxicode



Micro PDF417



Aztec



QR Code



PDF417



Notes

This image shows a single sheet of white paper with horizontal blue ruling lines. The lines are evenly spaced and run across the width of the page. There are no margins, text, or other markings on the paper.

This image shows a single page of white paper with horizontal blue lines. The lines are evenly spaced and run across the width of the page, typical of notebook or ledger paper. There are no margins, text, or other markings on the page.



Contact Opticon's regional office

Opticon Limited

F20a, 110 Butterfield
Great Marlings
Luton
Bedfordshire
LU2 8DL
United Kingdom

01582 433763
uksales@opticon.com

Contact details regional offices

Please check our website www.opticon.com for contact details of our regional offices.

Copyright Opticon. All rights reserved. This information is subject to change without prior notice.
For availability contact your local representative.